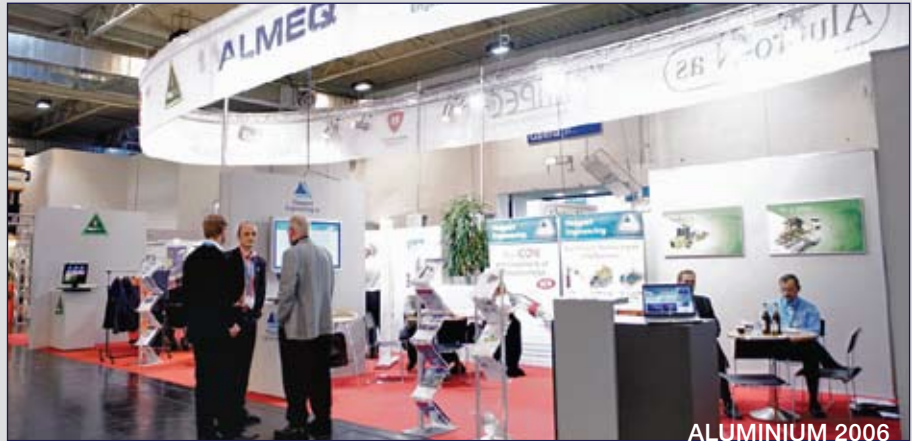




23.-25. SEPTEMBER



ALUMINIUM 2006

ALMEQ will once again exhibit at this years ALUMINIUM 2008 in Essen, Germany. This year ALMEQ is one of the companies that has taken an initiative to form a pavilion dedicated to the primary aluminium smelters. The primary pavilion is located in Hall 2 and ALMEQ will be at stand

2C30. You are invited to visit Jan D. Hansen, Hans Petter Bjørnstad and Erik A. Hansen to obtain the latest information on ALMEQ products and services.

Visit the official website for more information: www.aluminium-messe.com/primaerpavillon.cfm

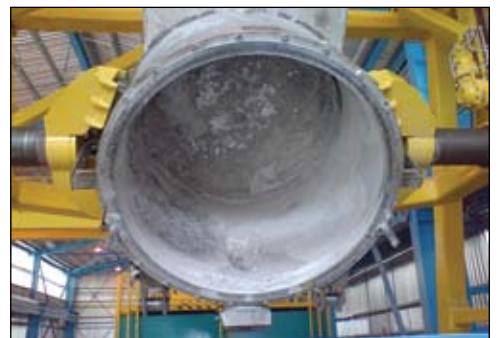
Successful start-up of new Crucible Cleaning Machine at ALUAR

ALMEQ is pleased to have successfully started up a fully automatic Crucible Cleaning Machine for the ALUAR smelter in Puerto Madryn, Argentina. The



machine efficiently cleans crucibles and requires only one operator at a time.

The crucibles are automatically picked up, put on the machine, cleaned, removed from the machine and returned to the pick up and delivery station. All debris is collected in an enclosed container with dust and noise kept at a minimum. Frequent and efficient cleaning of crucibles results in more metal per trip to the cast house. The efficient milling system for cleaning increases the lifetime of the crucible lining, saves money and reduces the amount of spent crucible lining material.



New order for Crucible Cleaning Machine for CBA

A new order for a Crucible Cleaning Machine has been received from Companhia Brasileira de Alumínio (CBA). This fully automatic system will clean the metal transport crucibles which are both oval and conical. The new machine for CBA will be machine number 30 since the first prototype was supplied to Elkem Mosjøen in 1980. The basic method for cleaning is still the same, but today's machines clean both hot and cold crucibles, all operated by a PLC. The payback on investment comes from reduced handling, less labour, fewer crucibles in circulation, improved lining life, reduced noise and a very clean environment around the cleaning operation.



Cooperation and joint venture marketing

ALMEQ Norway AS has been serving the primary aluminium industry since 1980 and has been involved in almost all kinds of equipment required in a smelter. As the industry progresses, modern smelters require suppliers to provide more branch expertise. ALMEQ has made agreements with TC Engineering and Impec to combine the know-how of each company. Impec will focus on carbon, TC Engineering on the cast house and ALMEQ on Potroom equipment, cathode rod-

ding and the crucible cleaning shop. TC Engineering, Impec and ALMEQ will promote this venture for the first time at Essen. ALMEQ will also continue cooperation with Equibras of Canada on Potlining.



Postal address:
ALMEQ Norway AS
P. O. Box 50
N-1403 Langhus, Norway

Visiting address:
ALMEQ Norway AS
Berghagan 8
N-1405 Langhus, Norway

Phone: (+47) 64 85 01 50
Fax: (+47) 64 86 89 10
E-mail: info@almeq.com
Web: www.almeq.com